



18 Naters Street , Whitley Bay NE26 2PG

- Three Bedrooms
- Large family bathroom
- Rear Yard
- Modern Fitted kitchen
- First floor
- Council Tax Band A

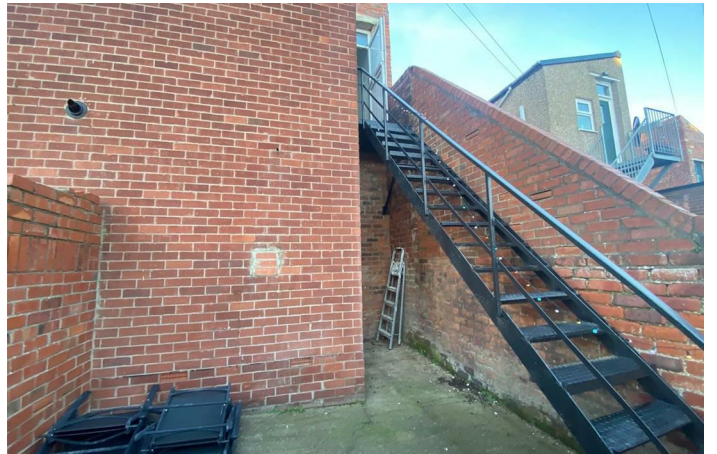
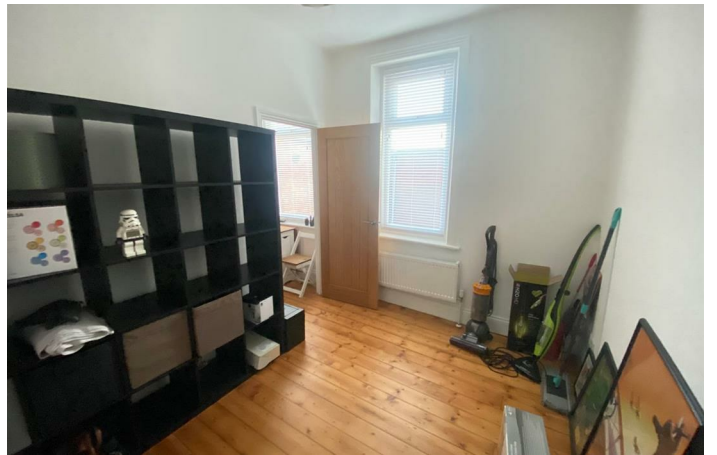
£995 PCM






A superb three bedroom first floor flat situated on Naters Street in Whitley Bay with sea views at the front and close to the town centre. The property has modern kitchen with appliances, four piece bathroom and is ready to move into. Briefly comprising; entrance hall, spacious lounge to the rear, modern kitchen , superb bathroom, three bedrooms and a private rear yard. There is also Gas central heating and double glazing. The property is to be let furnished only.








Local Authority North Tyneside Metropolitan Borough Council
Council Tax Band A
EPC Rating
Deposit £995
Furnishing Unfurnished

Energy Efficiency Rating		
	Current	Potential
Very energy efficient - lower running costs		
(92 plus) A		
(81-91) B		
(69-80) C		
(55-68) D		
(39-54) E		
(21-38) F		
(1-20) G		
Not energy efficient - higher running costs		
England & Wales	EU Directive 2002/91/EC	

Environmental Impact (CO ₂) Rating		
	Current	Potential
Very environmentally friendly - lower CO ₂ emissions		
(92 plus) A		
(81-91) B		
(69-80) C		
(55-68) D		
(39-54) E		
(21-38) F		
(1-20) G		
Not environmentally friendly - higher CO ₂ emissions		
England & Wales	EU Directive 2002/91/EC	



ML Estates Lettings Office

27 Avenue Road, Seaton Delaval, Tyne
 And Wear, NE25 0DT

Contact

0191 237 60 60
 lettings@mlestates.co.uk
 www.mlestates.co.uk

Agents Note: Whilst every care has been taken to prepare these particulars, they are for guidance purposes only. All measurements are approximate and for general guidance purposes only and whilst every care has been taken to ensure accuracy, they should not be relied upon and potential buyers/tenants are advised to recheck the measurements.